



📍 Royal Darwin Hospital, Northern Territory

# Darwin Innovation Hub Case Study

## Clinician-Led Healthcare Innovation in Action

A realistic implementation plan demonstrating how **Royal Darwin Hospital** can become Australia's first rural healthcare innovation hub, transforming from cost center to **economic driver** while improving patient outcomes across the Northern Territory.

📅 Implementation Ready: 2026-2028 | 💰 Projected ROI: 300%+ by Year 3

# Royal Darwin Hospital: The Perfect Foundation

Existing infrastructure and partnerships ready for innovation hub implementation

## Hospital Capabilities

- **Teaching hospital** status
- General medicine & surgery
- Medical imaging & pharmacy
- **Clinical trials** capability
- Emergency & trauma care
- Paediatrics & orthopaedics
- Dialysis & palliative care
- Multicultural care expertise

## University Partnerships

**Charles Darwin University (CDU)** - New School of Medicine, Menzies School of Health Research, Faculty of Health with interdisciplinary strengths

**Flinders University** - Northern Territory Medical Program (NTMP) partnership, Regional Training Hub

**Western Sydney University** - Medical school collaboration established 2024

## Workforce & Training

- **Primary allocation centre** for prevocational doctors in Top End
- Active collaboration with universities and specialist colleges
- **Medical education and training** programs
- Experience with rural and remote healthcare delivery
- Established **research and innovation** culture

## Strategic Location

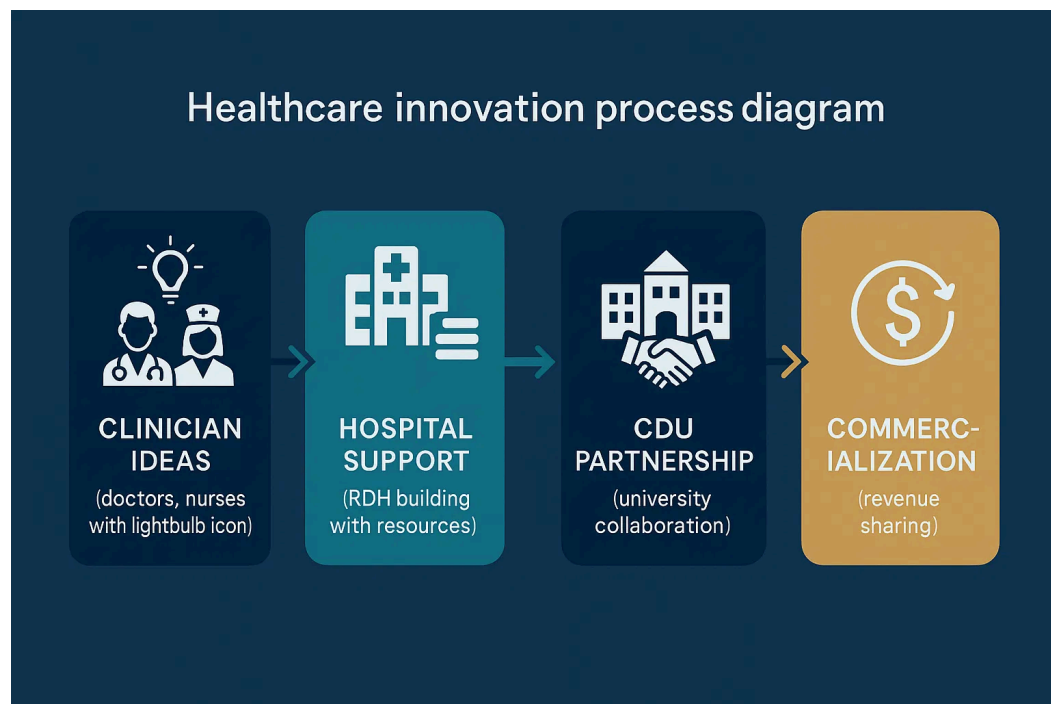
- **Hub for Top End** and remote area healthcare
- Close proximity to **CDU Casuarina campus**
- Gateway to **Asia-Pacific region**
- Tropical medicine and Indigenous health expertise

## Key Strategic Advantages

- ✓ Existing research infrastructure and clinical trials capability
- ✓ Established university partnerships with CDU, Flinders, and WSU
- ✓ Record \$2.33B NT Health budget providing funding foundation
- ✓ Teaching hospital status with innovation and training culture
- ✓ Multicultural expertise including Indigenous health specialization

# The RDH Innovation Model

Clinician-led innovation process with sustainable revenue sharing



## How It Works at RDH

- Frontline staff identify **real-world problems** during patient care
- Hospital provides **protected innovation time** (1 day/week)
- CDU partnership offers **technical expertise** and research support
- Solutions developed into **market-ready products**
- Revenue from commercialization **shared equitably**

## Clinician Benefits

- **Protected time** for innovation (1 day/week)
- **Financial rewards** through revenue sharing
- **Career advancement** opportunities
- **Recognition** as healthcare innovators

## Hospital Benefits

- **New revenue stream** from commercialization
- **Improved care delivery** through innovation
- **Staff retention** and recruitment advantage
- **Enhanced reputation** as innovation leader

## Revenue Sharing Model

30%

Clinician Innovators

40%

Royal Darwin Hospital

30%

CDU Partnership

Based on successful models at Mayo Clinic Ventures and Cleveland Clinic Innovations

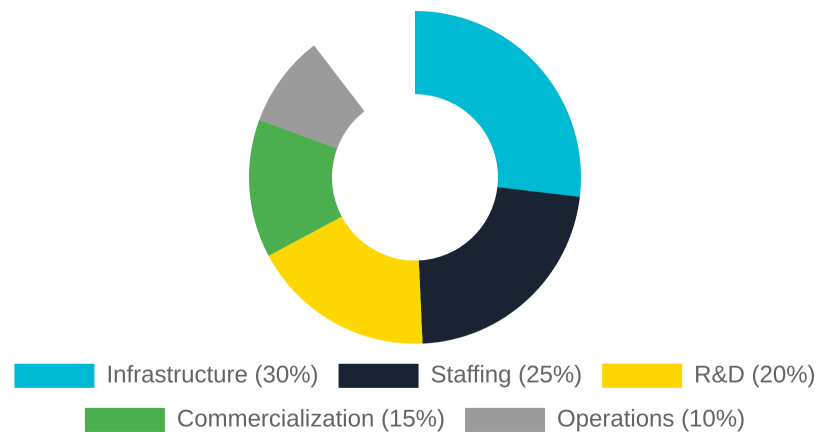
# Funding Strategy & Implementation Plan

Leveraging existing resources and strategic partnerships for immediate action

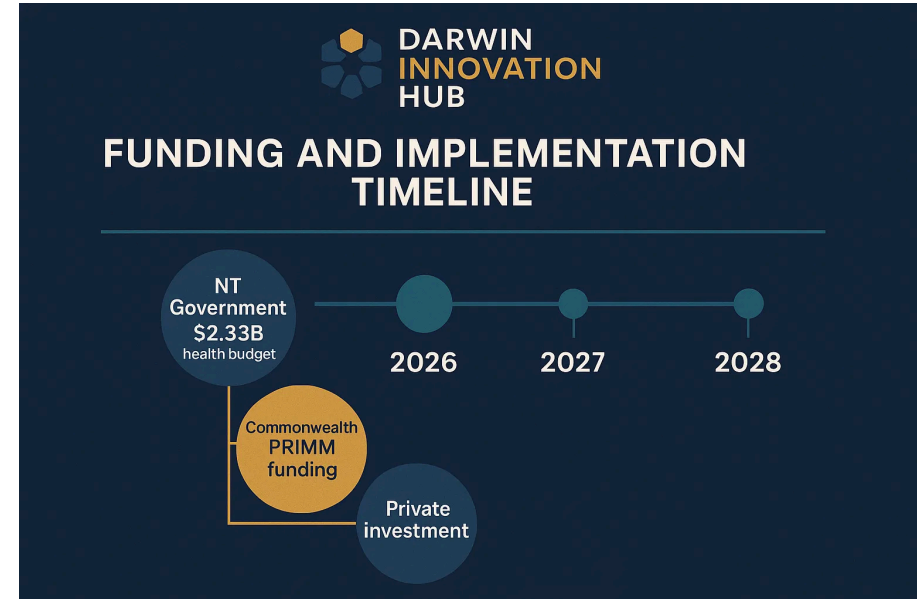
## \$ Funding Sources

Source	Amount	Purpose
NT Health Budget	\$1.2M	Infrastructure & staffing
PRIMM Program	\$750K	Rural innovation models
CDU Research Grants	\$500K	Research & development
Private Investment	\$1.5M	Commercialization support
In-kind Resources	\$800K	Staff time & facilities

## 📈 Budget Allocation



## 📅 Implementation Timeline



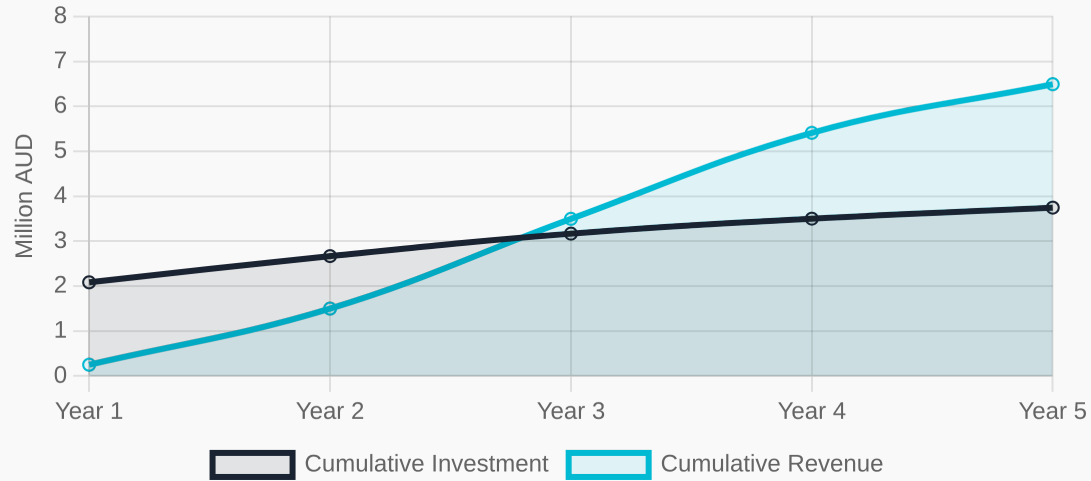
### Key Implementation Milestones

- ✓ **Q1 2026:** Steering committee formation & initial funding secured
- ✓ **Q2 2026:** Innovation space established at RDH & CDU partnership formalized
- ✓ **Q3 2026:** First cohort of clinician innovators selected & mentored
- ✓ **Q1 2027:** First prototype solutions developed & tested
- ✓ **Q3 2027:** Initial commercialization partnerships established
- ✓ **Q1 2028:** First revenue-generating solutions launched

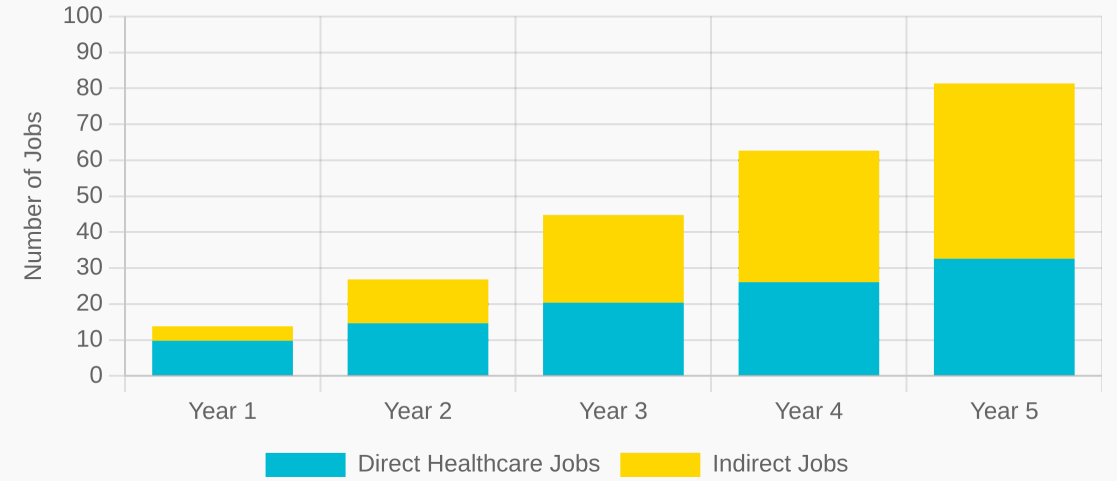
# ROI Projections & Economic Impact

Transforming healthcare from cost center to economic driver

## Financial Return on Investment



## Job Creation & Economic Impact



## 5-Year Financial Projections

**\$2.5M**  
Initial Investment

**312%**  
ROI by Year 5

**\$7.8M**  
5-Year Revenue

**Year 3**  
Break-Even Point

## Broader Economic Benefits

