

## ILS Laboratories

8222 Vickers St, Suite 106, San Diego, CA 92111  
(619) 329-3999 | ils-lab.com

## Klow - 80mg

**CRUSH** RESEARCH SUPPLY COMPANY  
Tested for: **Crush Research**  
<https://www.crushresearch.shop/>

**PASS**

COA #:	<b>COA-2026-D0URCR</b>	Method:	<b>Full QC Panel</b>
Lot Number:	<b>CRKLO-80-2604-1</b>	Analysis Date:	<b>04/22/2026</b>
Accession #:	<b>ACC-2026-0943</b>	Appearance:	<b>Good</b>
Concentration:	<b>80mg</b>	Volume:	<b>3mL</b>
Sample Matrix:	<b>Powder</b>	Received:	<b>04/17/2026</b>



Scan to verify  
authenticity at ils-lab.com

Identity	Purity
<b>Klow</b>	<b>99.47%</b>

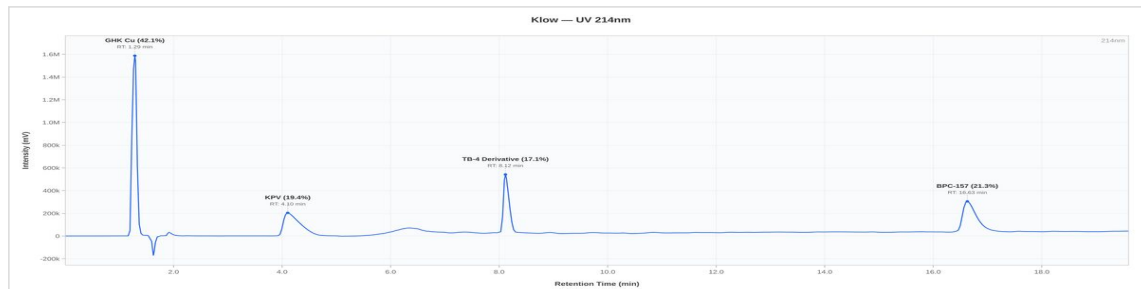
### Full QC Panel

Analyte	Specification	Result	Unit	Status
<b>Purity (HPLC)</b>	>= 95.0%	<b>99.47%</b>	%	<b>PASS</b>
<b>Net Peptide Content</b>	Report Only	<b>83.55</b>	mg	N/A
-- GHK-Cu (62.5%)		52.22	mg	
-- BPC-157 (12.5%)		10.44	mg	
-- TB-4 (12.5%)		10.44	mg	
-- KPV (12.5%)		10.44	mg	
<b>Identity (ID)</b>	GHK-Cu; KPV; BPC-157; TB-4	<b>Confirmed</b>	-	<b>PASS</b>
<b>Sterility (PCR)</b>	No Growth	<b>No Growth</b>	-	<b>PASS</b>
<b>Endotoxin (USP &lt;85&gt;)</b>	< 0.25 EU/mL	<b>NMT 0.05 EU/mL</b>		<b>PASS</b>



Klow 80mg - CRKLO-80-2604-1

### HPLC Chromatogram



Representative chromatogram, Conformity V2 (99.42% purity, closest to batch mean of 99.42%)




**Dr. Greg Kalyuzhny**  
Lab Director  
4/22/2026

COA #: **COA-2026-D0URCR**  
Access Code: **DSQYWJC2**  
Verify: [portal.ils-lab.com/verify/vEJ1JuQolwfEBi\\_E](https://portal.ils-lab.com/verify/vEJ1JuQolwfEBi_E)  
Issued: 4/22/2026

## ILS Laboratories

8222 Vickers St, Suite 106, San Diego, CA 92111  
(619) 329-3999 | ils-lab.com

## Klow - 80mg

**CRUSH** Tested for: **Crush Research**  
<https://www.crushresearch.shop/>

**PASS**

COA #:	<b>COA-2026-D0URCR</b>	Method:	<b>Full QC Panel</b>
Lot Number:	<b>CRKLO-80-2604-1</b>	Analysis Date:	<b>04/22/2026</b>
Accession #:	<b>ACC-2026-0943</b>	Appearance:	<b>Good</b>
Concentration:	<b>80mg</b>	Volume:	<b>3mL</b>
Sample Matrix:	<b>Powder</b>	Received:	<b>04/17/2026</b>



Scan to verify  
authenticity at ils-lab.com

### Heavy Metals Analysis (ICP-MS)

Test	Specification	Result	Status
Arsenic (As)	NMT 1.5 ppm	<i>Not Detected</i>	<b>PASS</b>
Cadmium (Cd)	NMT 0.5 ppm	<i>Not Detected</i>	<b>PASS</b>
Chromium (Cr)	NMT 10 ppm	<i>Not Detected</i>	<b>PASS</b>
Mercury (Hg)	NMT 1.5 ppm	<i>Not Detected</i>	<b>PASS</b>
Lead (Pb)	NMT 1 ppm	<i>Not Detected</i>	<b>PASS</b>

### Conformity Testing Results (3 samples tested)

Sample	Purity	Net Content	ID	Result
Dedicated V0	99.47%	83.55 mg	Confirmed	<b>PASS</b>
Conformity V1	99.36%	83.46 mg	Confirmed	<b>PASS</b>
Conformity V2	99.42%	83.51 mg	Confirmed	<b>PASS</b>
Mean	<b>99.42%</b>	<b>83.51 mg</b>	—	—
Std Dev	<b>0.0450%</b>	<b>0.0368 mg</b>	—	—

### Notes & Methodology

- Date Tested: 04/22/2026. Methods: Full QC Panel.
- The sample was confirmed to be Klow by HPLC. Identification by chromatographic retention time comparison with a reference standard.
- Elemental impurities analyzed by Inductively Coupled Plasma Mass Spectrometry (ICP-MS) per USP <233> methodology.
- Per-component content calculated from total net peptide content using the manufacturer's stated formulation ratio (GHK-Cu 62.5%, BPC-157 12.5%, TB-4 12.5%, KPV 12.5%). All components confirmed present by HPLC identity testing.
- Chromatogram shown is representative: Conformity V2 (99.42% purity, closest to batch mean of 99.42%).




**Dr. Greg Kalyuzhny**  
Lab Director  
4/22/2026

COA #: **COA-2026-D0URCR**  
Access Code: **DSQYWJC2**  
Verify: [portal.ils-lab.com/verify/vEJ1JuQolwfEBi\\_E](portal.ils-lab.com/verify/vEJ1JuQolwfEBi_E)  
Issued: 4/22/2026