

## ILS Laboratories

8222 Vickers St, Suite 106, San Diego, CA 92111  
(619) 329-3999 | ils-lab.com

## BPC-157 - 5mg

Independently tested for: Sobe - 200 Hypoluxo Road, Palm Beach County, FL 33462

COA #:	<b>COA-2026-0001</b>	Method:	<b>Full Peptide QC Panel</b>
Lot Number:	<b>032026</b>	Analysis Date:	<b>03/26/2026</b>
Concentration:	<b>5mg</b>	Appearance:	<b>Good</b>
Received:	<b>03/20/2026</b>	Volume:	<b>3mL</b>

**PASS**



Scan to verify authenticity at ils-lab.com

Identity

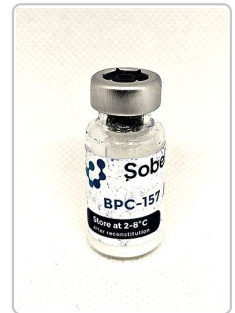
**BPC-157**

Purity

**99.54%**

### Full Peptide QC Panel

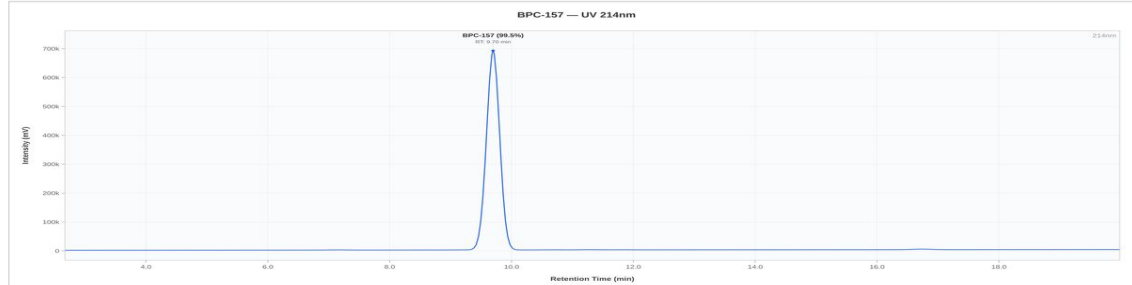
Analyte	Specification	Result	Unit	Status
Purity (HPLC)	> 98%	<b>99.54%</b>	%	<b>PASS</b>
Net Peptide Content	Report Only	<b>5.09</b>	mg	N/A
Endotoxin (USP <85>)	< 0.05 EU/mL	<b>0.024</b>	EU/mL	<b>PASS</b>
Sterility (USP<71>)	No Growth	<b>No Growth</b>	-	<b>PASS</b>



BPC-157 5mg - 032026

Date Tested: 03/26/2026 | Method: Full Peptide QC Panel

### HPLC Chromatogram



BPC-157 5mg - 032026: UV Chromatogram

### Heavy Metals Analysis (ICP-MS)

Test	Specification	Result	Status
Arsenic (As)	NMT 1.5 ppm	<i>Not Detected</i>	<b>PASS</b>
Cadmium (Cd)	NMT 0.5 ppm	<i>Not Detected</i>	<b>PASS</b>
Chromium (Cr)	NMT 10 ppm	<i>Not Detected</i>	<b>PASS</b>
Mercury (Hg)	NMT 1.5 ppm	<i>Not Detected</i>	<b>PASS</b>
Lead (Pb)	NMT 1 ppm	<i>Not Detected</i>	<b>PASS</b>

Elemental impurities analyzed by Inductively Coupled Plasma Mass Spectrometry (ICP-MS) per USP <233> methodology.




**Dr. Greg Kalyuzhny**  
Lab Director  
3/26/2026

COA #: **COA-2026-0001**  
Access Code: **DZJYJONF**  
Verify: [portal.ils-lab.com/verify/WpJGiv4DZbxSguq4](https://portal.ils-lab.com/verify/WpJGiv4DZbxSguq4)  
Issued: 3/26/2026